

DEPARTMENT OF PRIMARY INDUSTRIES

File: 06-7014

DIAGRAM OF PETROLEUM PRODUCTION LEASE No. 5

(PPLA 7)

HOLDER: AGL GAS PRODUCTION (CAMDEN) PTY LIMITED &

AGL (SG) (CAMDEN) OPERATIONS PTY LIMITED

PARISHES: COOK, MINTO, NARELLAN, ST PETER, CAMDEN,

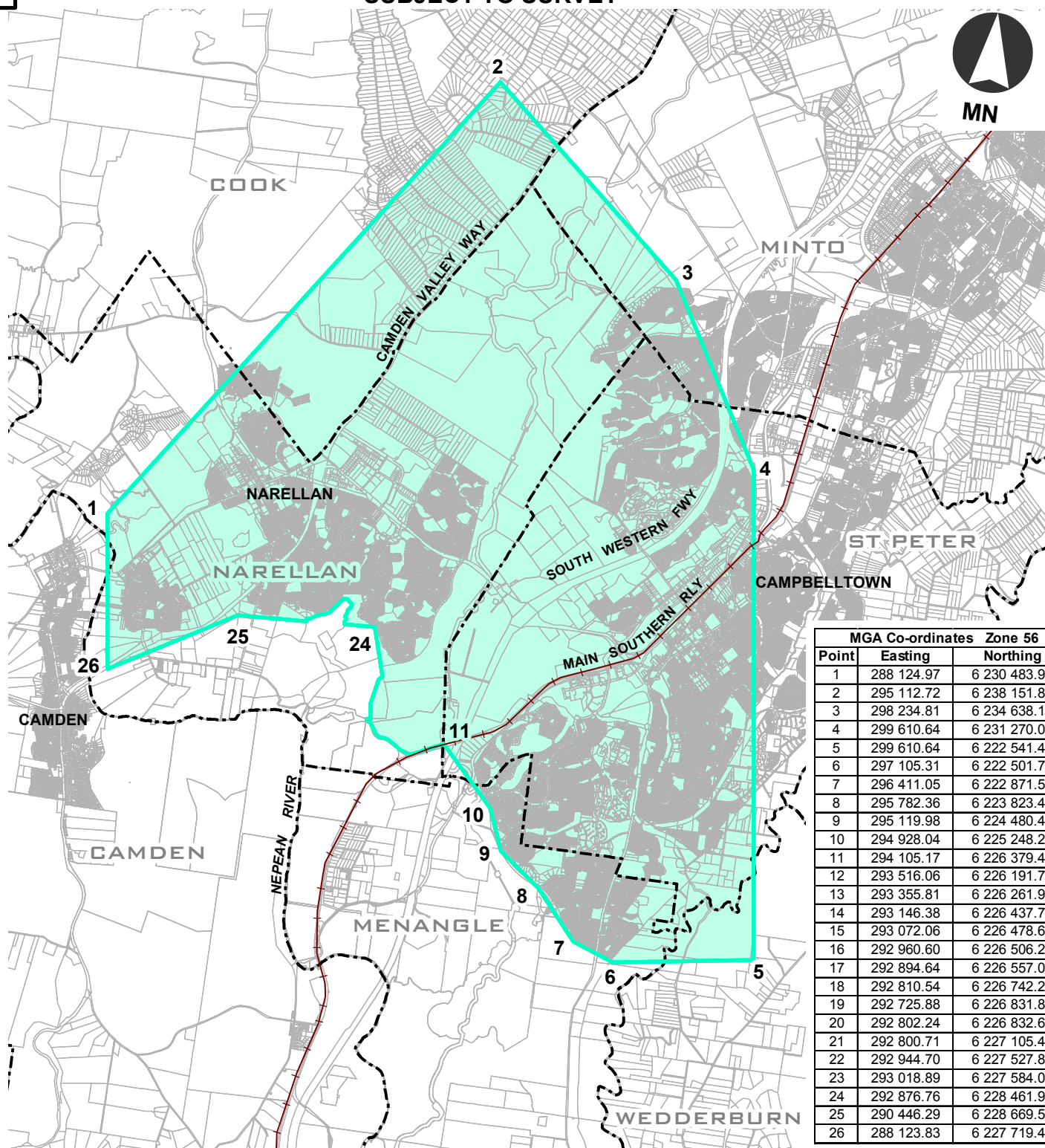
MENANGLE AND WEDDERBURN

COUNTY: CUMBERLAND

SCALE 1: 100000

REF MAPS: 9030-2-S, 9029-4-N AND 9029-1-N

SUBJECT TO SURVEY



MGA Co-ordinates Zone 56		
Point	Easting	Northing
1	288 124.97	6 230 483.97
2	295 112.72	6 238 151.84
3	298 234.81	6 234 638.17
4	299 610.64	6 231 270.02
5	299 610.64	6 222 541.40
6	297 105.31	6 222 501.72
7	296 411.05	6 222 871.58
8	295 782.36	6 223 823.48
9	295 119.98	6 224 480.49
10	294 928.04	6 225 248.24
11	294 105.17	6 226 379.43
12	293 516.06	6 226 191.70
13	293 355.81	6 226 261.95
14	293 146.38	6 226 437.70
15	293 072.06	6 226 478.65
16	292 960.60	6 226 506.22
17	292 894.64	6 226 557.00
18	292 810.54	6 226 742.23
19	292 725.88	6 226 831.85
20	292 802.24	6 226 832.63
21	292 800.71	6 227 105.47
22	292 944.70	6 227 527.82
23	293 018.89	6 227 584.01
24	292 876.76	6 228 461.95
25	290 446.29	6 228 669.54
26	288 123.83	6 227 719.43

UNIVERSAL TRANSVERSE MERCATOR PROJECTION
HORIZONTAL DATUM: GDA94NSW DEPARTMENT OF
PRIMARY INDUSTRIES
MINERAL RESOURCES0 0.5 1 2 3 4
KmsAREA: abt. 102.4 km²Prepared by: G Walker
Date: 07-07-2009
Approved by: P. Hord
Date: 09-07-2009
Maitland Regional Office

DISCLAIMER: The compilation of information shown on this diagram is derived from plans and data, some of which has been produced and provided by third parties. Title boundaries have been adjusted to maintain their relationship with the digital cadastral database in some circumstances, thereby creating certain inaccuracies in the data. This information does not constitute part of the record required under Section 159 of the Mining Act 1992 or Section 95 of the Petroleum (Onshore) Act 1991. The Department of Primary Industries and the State of New South Wales make no statement, representation or warranty that the titles information shown on this diagram is complete, accurate or free from error. Users rely on the titles information supplied on this diagram at their own risk. The Department of Primary Industries and the State of New South Wales accept no responsibility for any person, acting on, or relying on, or upon any of the titles information shown on this diagram, and disclaim all liability for any loss, damage, cost, expense or injury (including death) incurred or arising by reason of any person using or relying on the titles information contained on this diagram by reason of, or by any error, omission, defect or misstatement (whether such error, omission or misstatement is caused by or arises from negligence, lack of care or otherwise). Users should always verify historical material by making and relying upon their own separate inquiries prior to making any important decisions or taking any action on the basis of titles information.