

Cut the quirky

Tony Abbott recently intimated that it's not necessarily a bad thing to have "quirky and interesting characters" in the Senate.

I have deep concern for any more quirky policies who engage in cronyism, travel rorts, electoral-roll fraud, illegal donation rackets and wedding-expense scandals. It's not rocket science to understand that a private wedding is not official business.

Come on, Tony, let's get past the dog whistle slogans and build a strong and stable government that, to use your words, "lives within its means". It is high time we had an auditor-general who was absolutely astute in overseeing ethics, entitlements, impropriety, corruption and due legal processes. The tax-paying public expects accountability — and its polities to be available for strict scrutiny.

Dr Poobal Naidoo, Blair Athol

Fracking = quakes?

Food for thought everyone. Could the recent earthquake be linked to fracking that is currently under way in the Campbelltown area? Fracking has been linked to many earthquakes the world over. This worries me.

Daniel McKenzie [via email]

Scenic Hills cemetery

I totally support others in their opposition to plans to build a cemetery in the Scenic Hills at historic Varroville by the Catholic Metropolitan Cemeteries Trust. This land has such a wonderful history, held variously by Robert Townson, Thomas Wills (brother-in-law to colonial doctor William Redfern) and Charles Sturt, the famous explorer.

Even though the Central Hills Scenic Protection Lands zone was created in April

1972 to preserve the land use in the area, I worry that when the application by the Catholic Trust comes before our council, councillors of that faith may forget they represent the community — and not the organisation making the application. Let us hope not.

Noeline Jury, Kearns

I've been following the Catholic Church's proposals to desecrate the Scenic Hills. I have some alternate suggestions:

1. You have quite a few schools in the area so perhaps you could utilise some of the land within their boundaries as a cemetery.
2. There is a vast tract of land on Narellan Road used as a friary/nunnery — use that.

In short, why don't you just go away and leave our greenbelt alone?
I bet if I desecrated one of your churches you would be up in arms — so now you know how I and a lot of people feel about our Scenic Hills. I'd be more than happy to get a reply from the church — which should, of course, include a full list of all its local landholdings — so that we can see just what hypocrites they are.

Alan James, Leumeah

No party ties

We residents need to make a stand against the attitude of the various party political members of our council who think the position of mayor is something that can be manipulated to suit their own political ambitions. The mayor must be popularly elected by the residents for the full term of the council. Also, political parties must be barred from local government.

I'd encourage every person eligible to vote at the next election to not vote for any candidate who nominates themselves as a representative of any political party.

John Barker, Campbelltown

Chatter from the web and Facebook

[Mark Koosache quits Liberals after censure for speaking to the Advertiser] It seems the Liberal idea of freedom for individuals only applies when those individuals are cashed up.

Neha Madhok

DON'T you just love the Libs?

Dick Portus

[Death of Wedderburn artist John Peart] A huge loss, John was a great artist and a great local. RIP.

Eric Kontos

MY THOUGHTS are with the family, x x

Kelly Hartland

[Narellan Road — and what needs to be done] A road from the back of Mount Annan/Narellan Vale to the back of the uni somewhere near Menangle Road. Have on-ramps and exits at the Menangle Road overpass! Put the bridge over Broughton Street and make Badgally Road into a new multi-lane main road passing St Gregory's and over to Camden Valley Way! Also upgrade Raby Road to two lanes for the rest of the way to Camden Valley Way from the last roundabout at Kearns/Raby. Narellan Road is bearing the brunt of thousands of cars it was never built to carry. The population will be thousands more in only a few short years with all the new estates. We need the infrastructure now. Correction, we needed it 10 years ago!

Karen Napper

THREE lanes all the way to the M5 on-ramp city-bound; the congestion is from people who shoot up the left lane to cut in after the lights at the Botanic Garden.

Kirilly Scicluna

MORE route options for people who don't need the motorway. Maybe connect the back of Gregory Hills up as an option or from the back of Mount Annan to the back of Macarthur Square.

Jasmine Wilson

STOP people from cutting in right at the end and being selfish drivers. Yeah, you all have places to be — but so do we all!

Chloe Ianni

WHAT would help a lot is a bridge off Menangle Road onto and from the highway.

Casey Spence

STOP development until the road is fixed.

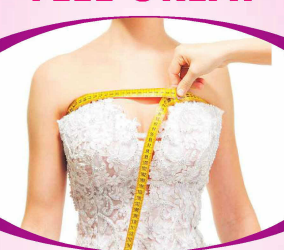
Keith Atkins

TOO many people hog the right-hand lane.

Brendan Roy

macarthuradvertiser.com.au

LOOK GOOD FEEL GREAT



ALTERATION SPECIALIST

Wedding Dresses • Evening Wear
Bridesmaid Dresses

All other alterations
Call **0448 031 614**

Read Us Online - Cover to Cover

Click on the eEdition Link



www.macarthuradvertiser.com.au

FREE SEMINAR

Presented by

Bryn Robinson & Paul Plummer



Fitzpatrick group will show you, how you can use your super to invest in property. You'll gain the knowledge to invest with confidence and take control of your financial future.

Have you thought about
using your superannuation
to invest in property.

**Tuesday
22 October 2013
6.00 - 8.00pm
BEC
Smeaton Grange**

ENJOY Financial Freedom

REGISTER NOW

1300 780 191

fgadmin@fitzpatrickgroup.com.au

We provide the freedom.....
spend it how you like.

FITZPATRICK GROUP



0632167444-091013

ACCENT CARPETS CARPET, BAMBOO & TIMBER

GREAT NEWS

Accent Carpets Now Open in Narellan with
Don's Tiles

Your One Stop Flooring Shop

Come in For Our opening Specials
Open 6 Days

Narellan Supa Centre

Shop 7, Exchange Parade Narellan

Phone: 4631 5999 | www.accentcarpets.net.au



Looking for a lifestyle change?

Experience independent retirement living at
The Whiddon Group Glenfield

- Modern 2 bedroom units available now from \$230,000
- Open plan living with modern kitchen and bathroom
- Cafe, hairdresser and bank branch located onsite
- Talk to us today about our onsite community care services

Open for inspection October 17th and 24th from 11am to 12:30pm

Call 0419 432 690 for more information or viewing times

www.whiddon.com.au

The Whiddon Group
Life is a Journey