

STOP AGL's COAL SEAM GAS FIELD CAMPBELLTOWN & CAMDEN

Camden Gas Project Stage 3, Northern Expansion

AGL Energy Ltd (AGL) has applied to the NSW Minister for Planning (Project Application 09_0048) to put up to 66 coal seam gas (CSG) wells across Campbelltown's Scenic Hills from **Denham Court** in the North to **Mount Annan** in the South, and into Camden's newest suburbs...and this is just the beginning: storage tanks, lateral wells that run for **up to 2.5 kms under the surrounding Sydney suburbs**, well sites joined by pipelines and access roads for industrial rigs and trucks carrying contaminated waste water and chemicals leading into residential streets and roads. A gas treatment plant may still be built.



The Scenic Hills Today: horses, historic 1830's Charles Sturt dams and Carmelite Monastery.

What is this madness?

- The Scenic Hills are zoned Environmental Protection (Scenic). *Extractive industries* and *mines* are prohibited under the zoning. Religious communities of nuns and friars, small rural-residential holders, recreational establishments and farmers set up here believing their rural tranquillity was protected. Yet NSW legislation allows AGL to ignore this and treat the area as if it was zoned for heavy industry.
- More than 150,000 people live in the affected area with plans to expand the greater region to 500,000 taking much of Sydney's population growth.
- AGL has been given a **Petroleum Production Lease (PPL)** to mine in Sydney as far north as Raby Road.
- Its **Petroleum Exploration Licence (PEL2)** allows it to go even further, exploring for coal seam gas across Sydney's outer western suburbs from Campbelltown to the Hills District in the north.
- And it doesn't stop there...AGL says it does not know where the aquifers in this area flow to but 'probably Sydney Harbour'.

AGL produces 5-6% of NSW's gas from the Camden Gas Project. This level is sustained by the addition of new wells now spreading into Sydney. Is 5% worth the risks?

- It will 'industrialise' our much loved Hills - the South West's 'Centennial Park' - and our suburbs.
- AGL's main gas gathering pipeline will run beside the Upper Canal that supplies water to Sydney.
- Despite recent media claims, AGL will *not* rule out using 'fracking' to release the gas. Expert advice to the NSW Minister about its risks is being ignored.
- Land & house values may be affected.
- Australia's **National Water Commission** has warned about the cumulative impact of CSG extraction.
- Australia's **National Toxics Network** says many of the chemical combinations used in drilling and 'fracking' are not approved for safe usage.
- **NSW Health** says AGL has not adequately assessed the health risks of CSG mining in the area.
- CSG mining is highly experimental. **Accidents** happen:



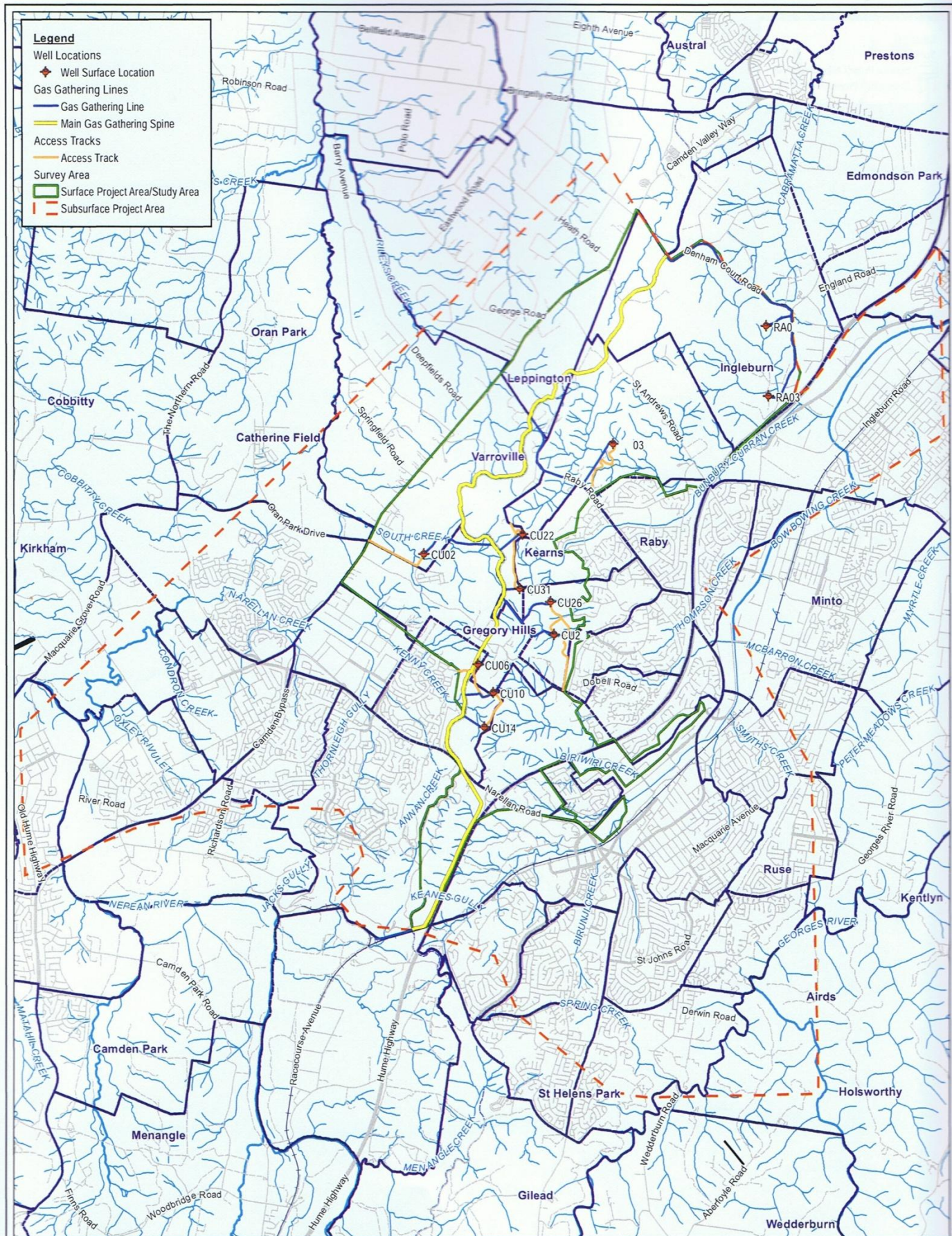
AGL's gas well 'incident' at Menangle May 2011

The Camden Gas Project, operated first by Sydney Gas and then AGL, has been *producing* gas on Sydney's urban fringe for 11 years...but did you know...?

- There has been non-compliance with licence conditions of the Camden Gas Projects' Environmental Protection Licence (EPL No 12003) in each year since it was issued in 2004.
- Full impacts on groundwater in prior stages of the project are unknown due to the minimal level of data provided by AGL in its Annual Environmental Performance Reports (Mudd, 2010), breaching conditions of its PEL2 & PPLs (Potts, 2011).
- In August 2012 AGL admitted it had failed to conduct continuous air monitoring at its Rosalind Park Gas Treatment Plant for 4 years in breach of its EPL, now the subject of an investigation by the EPA.

The NSW Department of Planning is continuing to accept late submissions on this project even though it has been placed 'on hold'. Until AGL's licence is cancelled it remains a threat. Find out more by visiting our website.

Scenic Hills Association: www.scenichills.org.au



Biosis Research Pty. Ltd.
Tate Street
Wollongong
NEW SOUTH WALES 2500

Offices also in:
Sydney Canberra
Ballarat Melbourne Wangaratta

Figure 3: Proposed Amended Project

Acknowledgements: Aerial Imagery - NearMap Digital Topographic Database State of New South Wales
Land and Planning Management Authority 2011

Date: 12 September 2012
Checked by: ASF
Drawn by: ANP
File number: 149 5
Path: P: 14900s 149 5 Mapping Report Figures 149 5 F AR Development 20120 0.mxd

0 0.6 1.2 1.8 2.4 3
Kilometers
Scale 1: 0 000 A
Coordinate System: GDA 1994 MGA one 5

